

30 Years of Viewpoint

We were recently contacted by a previous Parish Councillor who, although having moved away from Soudley, keeps in touch and continues to read Viewpoint.

She was a Parish Councillor in 1991 when Viewpoint was first published and has kept some of the early issues, including the very first Viewpoint published in August 1991.



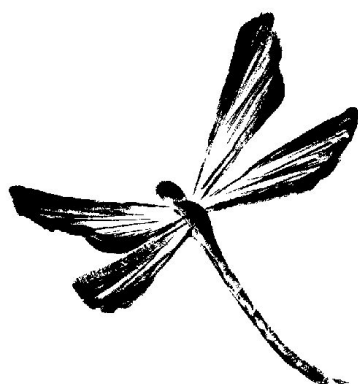
She has very kindly sent me copies of the very first issues of Viewpoint from August and September 1991 and they have proved to be very interesting reading.

The main article in the first two issues concerned the formation of the Soudley Action Project, which was set up in order to attempt to purchase the White Horse pub from its brewery owners with a view to retaining it for the community, and to turn it into a combined Post Office, shop and pub. Their concern was the decline in services in rural communities and the pub being for sale was seen as an opportunity to save it for the village and to retain those vital services, the village shop in Soudley having shut its doors in 1987.

Other reports covered the formation of a new committee for the Ruspidge Welfare Trust, the former committee having resigned over complaints made by the residents of Ruspidge about the siting of new play equipment in the playing fields.

It is also interesting to note that then, as now, there were concerns about fly-tipping, the poor state of the roads in the area, and a proposed housing development in Ruspidge requiring improvements to the road layout and access prior to planning permission being granted. Thirty years apart, all three of these issues are current items of concern both to the Parish Council and to local residents.

Both of these two original issues will be posted online, along with this October issue of Viewpoint.



FUN FOREST FACTS

Hopefully you will have been lucky enough to see a Dragonfly recently as they can usually be seen between June and October. Dragonflies have the biggest eyes in the insect kingdom and can see things in detail up to 15m away.

There are over 30 different species of Dragonfly and 20 species of their smaller cousin the Damselfly. Most adult dragonflies live only a few weeks.

Most Dragonflies have an average flying speed of 55kmh (35mph), which is like running 100m in approximately 5.8 seconds.

Cinderford Northern Quarter Scrutiny Inquiry

By Cllr Nicky Packer

The Northern Quarter area is on the edge of Cinderford, from Broadmoor Road up to the A4136. It was formerly dominated by mining and other heavy industry. After it was landscaped in the 1990s it became a haven for wildlife, with many rare and protected species.

A planning policy to build on the Northern Quarter was adopted in 2012. The college was relocated from Five Acres in 2018. The college may have left the Forest of Dean altogether without the incentives that were given to move to the Northern Quarter. A section of road was constructed from Broadmoor Road to give access to the college. The cost of this road escalated, finally costing an extra £2.5m on top of the £3.8m contract price.

No further development has taken place since, although there are development sites chosen for housing, a hotel and industrial / business use. To provide access to all the building plots means extending the new road to meet the A4136. If completed the road would provide a by pass for Steam Mills.

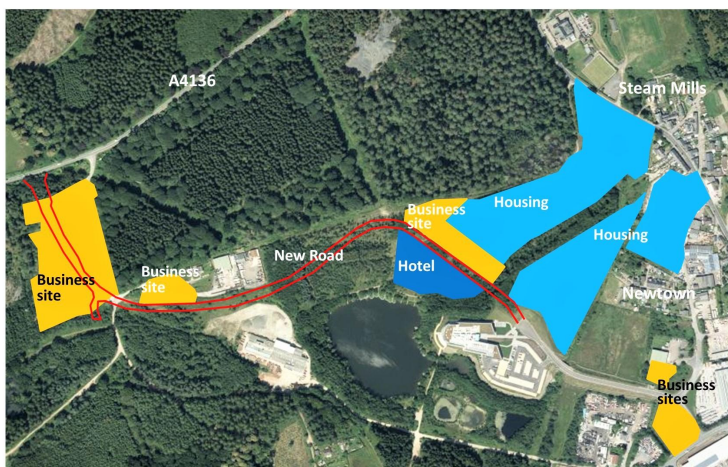
Much of the land earmarked to be built on is owned by the District Council. Most of the Northern Quarter is part of the Linear Park and classed as a 'Key Wildlife Site', including the areas planned for development.

The District Council scrutiny committee will soon be looking at the planning policies for the area to see whether they are the best way forward.

The Scrutiny review begins in November with evidence gathering sessions that will be live streamed. At present the times are 2nd, 5th, 11th November from 10am until 4pm and at 6pm on November 10th.

Anyone wishing to present evidence to the inquiry should get in touch with the Council before 18th October.

Phone and ask for Democratic Services or email democratic.services@fdean.gov.uk



Acknowledgement for base aerial photo: Google maps
Cinderford Northern Quarter



Your Viewpoint, Your Say

Viewpoint is now 30 years old. Have your say on the future of Viewpoint and let us know what you would like to see included and how you would like to see Viewpoint develop over (hopefully) the next thirty years?

How to distribute Viewpoint to the readers of the Parish is obviously one of the larger issues. In recent times, we have moved away from paper copies of Viewpoint because of the cost and environmental impact of mass printing it. Ultimately, the cost of printing, distributing and disposing of unwanted copies of Viewpoint is borne by you, the Council Tax payer of the Parish.

All areas of local government are having their budgets cut year on year and in order to preserve other services, it was decided (quite rightly as we are sure you will agree) to move Viewpoint online wherever possible and preserve funds for other services, such as maintaining the play-parks in the parish, grass verge cutting and provision and emptying of dog-waste bins.

Of the many questions we would like your answers to therefore, is how would you prefer to receive Viewpoint?

Would you like a more extensive Viewpoint only website reporting on local Parish issues?

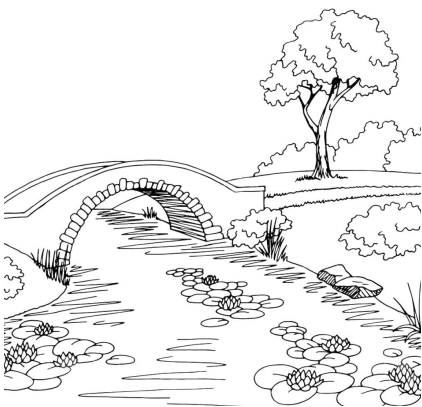
Would you like a smart phone App so that items like emergency road closures, school closures, local events or local Parish news items can be pinged directly to your mobile?

Would you be happy to pay a subscription fee so that you could continue to receive a paper copy?

What sort of articles would you like to see in Viewpoint? Would you be happy to see advertisements in it to help subsidise its provision? Would you like to see a regular slot for items such as gardening or cooking?

Viewpoint is the community newsletter for Ruspidge and Soudley. Let us know what you want.

Have your say by emailing: viewpoint@lilaccottage.online



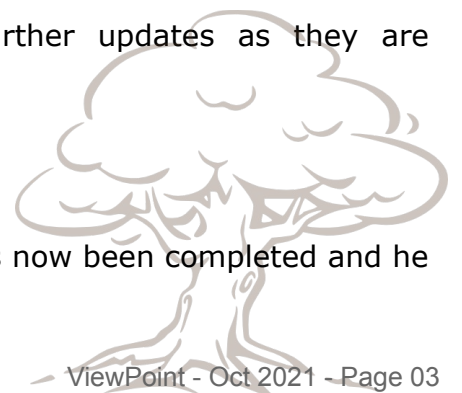
Road Closures, Update

In previous issues of Viewpoint, we reported on the proposed closure of the main road from Soudley to Blakeney to allow repairs to be done to the bridge and retaining wall. We have been informed that these works have now been postponed and that, at present, no date has been set for them to commence.

We will, of course, bring your further updates as they are published by Shire Hall.

The Hod Boy sculpture

The renovation and repair of The Hod Boy on the Blue Rock Trail has now been completed and he will shortly be returned to his plinth.



St Whites School in Ruspidge has installed a Clothes Bank, which is located at the Buckshaft Road entrance. All are welcome to make donations and the much needed funds received from the clothes bank will be used for the benefit of the children of St Whites School.



St White's Primary School
Challenge, Commit, Conquer and Celebrate



MIDDAY SUPERVISOR VACANCIES

St White's School are looking to appoint friendly, flexible and highly motivated MDSAs to help support children across the school during our lunchtimes.

The posts will be a part-time, fixed term contract commencing as soon as possible until Wednesday 31st July 2022, with the potential to becoming a permanent contract. The position will be reviewed subject to a 3-month probationary period. The salary is on Grade 2, points 2-3, salary £18,198 - £18,562 pro rata. Hours of work is 6.25 per week.

If you feel that you have the right experience, skills and enthusiasm, and would like to join our highly committed team, please contact us on 01594 822311 or visit the school website where the application form and further information can be found.

The school is committed to safeguarding and promoting the welfare of children and young people.

It expects all staff and volunteers to share the same commitment. This position is subject to an enhanced DBS check. The school's safeguarding policy can be found here: <https://www.st-whites.gloucs.sch.uk/web/policies/336096>

Closing Date: Friday 1st October 2021

Interview Date: Friday 8th October 2021



School Website Vacancy Page –

<https://st-whites.eschools.co.uk/web/vacancies/335884>

Sneyd Wood Road, Cinderford,
Gloucestershire, GL14 3GD
Tel: 01594 822311
admin@st-whites.gloucs.sch.uk
<http://www.st-whites.gloucs.sch.uk>
www.facebook.com/stwhitesprimary



"This is a good school."
Ofsted 2019

RUSPIDGE MEMORIAL HALL NEWS

Thanks to all you lovely folk who supported our open Day in September. We had many visitors who came to look around, check out the new facilities, buy things from the table top sale, enjoy the wall displays and have a go at the craft in the lower hall, the place was buzzing!

As part of the open day we held a 'Macmillan Coffee Morning' and raffle, this raised a grand total of £250 for the charity - which is an outstanding amount!

Improvements to the hall continue, the entrance to the hall has been stripped and painted and now looks very smart.

We have taken expert advice and made the hall dementia friendly, which reflects our intention to make the hall as inclusive as possible. Our thanks to the hardworking volunteers who did this work.

Booking for clubs and societies are now picking up, plus we have several parties booked for October and November....

See below for details of the regular groups

Main Hall

Monday	Yoga - 6 - 8.30pm
Tuesday	All steps Dance Class - 9.30 - 11.00am
	Parish council Meeting - 7 - 9pm Second Tuesday of the month, alternating between Ruspidge and Soudley hall.
	Ruspidge Gardening club - 7.15 - 9pm 3rd Tuesday of the month
Wednesday	Exercise class - 1.45 - 2.45pm
Saturday	Dancestars - 9.00 - 10am
Sunday	Shaolin Kung Fu - 6.30 - 8.30pm

Lower Hall

Monday	Craft - 2 - 4pmFirst Monday of the month
	Book club - 7 - 8pmSecond Monday of the month.

For more details on any of the above please ring Jenny East 01594 823620

200 Club

Greetings to all our 200 club members who support the hall. Over the years your money has improved the hall for all our users. Many thanks!

Draw for October:

The latest draws:

	£30 - 1 winner	£20 - 2 winners	£10 - 2 winners
Oct	67 - Simon Gardner	193 - Abby Jones 133 - Veronica Ford	61 - Graham Byett 5 - Laura Riddell
Congratulations to our winners and thanks to all for supporting our local hall by being part of the 200 club			

Hello Everyone

Unfortunately and very disappointingly for the children of Soudley School and FOSS (Friends of Soudley School), the scheduled Fun Day and Duck Race had to be cancelled due to the Crayfish Plague currently infecting the waters around Soudley.

Therefore, the first event at the Village Hall since lock down began in March of 2020 is a quiz night on Saturday 9th October from 7pm with light supper, so come on all you quizers get your thinking caps on! Maximum team size is 6 people. Let's make this event successful.



We then move swiftly onto our annual bonfire & fireworks on Friday 5th November from 6pm with BBQ, refreshments, mulled wine & cider. **FREE ENTRY.**



Some minor repair work has also been carried out on the wooden bridge leading to the hall. Thank you and well done to committee members Craig, Paul, Mark & Nick for this.

**MACMILLAN
CANCER SUPPORT**

We also held our Macmillan coffee morning on 25th September, Paul Billis had already had donations of nearly £500 before the day even arrived which was fantastic, will update you all with the final total raised on the day in the next issue.



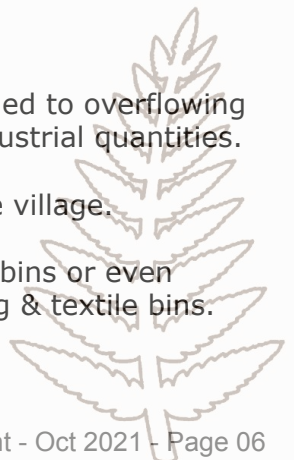
Recycling Bins

On a more sour note, the recycling bins by Soudley village hall have been getting filled to overflowing very quickly in recent months, some of which is being brought in in larger, more industrial quantities.

These bins are there for the use of the villagers NOT for businesses from outside the village.

The village hall committee are considering installing CCTV to monitor the use of the bins or even removing them altogether if this misuse continues, with the exception of the clothing & textile bins.

Soudley village hall AGM is on Tuesday 26th October 7.15pm all welcome.



The Dean Heritage Centre, located in Soudley, aims to preserve the heritage of the Forest with stories and artifacts and to bring it back to life by creating an exciting, interactive centre.

Until 31st December Foresters' Forest exhibition

Find out about the key achievements of the 38 projects that make up the programme funded by the National Lottery Heritage Fund from 2017-2022. The many and varied projects in the Forest of Dean have helped sustain, protect, celebrate and reveal our built, buried, cultural and natural heritage.

Until 31st October Happy is the Eye film

As part of the Forest Oral Histories project, Dean Heritage Centre commissioned artist & documentary filmmaker Ryan Powell to create a film. The film uses recordings and photographs sourced from the Dean Heritage Centre archive and the Voices from the Forest project, to build up an image of life in the Forest of Dean during the 20th century, with a focus on ways that people directly interacted with the natural landscape as part of their way of life. A beautifully created and fascinating film on Forest life.

23rd-31st October Halloween Half term

Join us for spooktacular family fun to enjoy scary trails, creepy craft and pumpkin carving. You can explore our haunted cottage where the resident witches may invite you in for a cup of witches brew or search the woodland for monsters if you dare and our team of artists and facilitators will be here to help you have a simply monstrous time. Pick a pumpkin from our cottage pumpkin patch and design your own ghoulish lantern to take home. On Tuesday 26th there will be farm animals in our paddock.

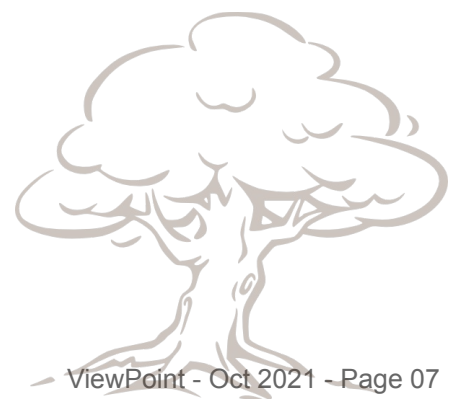
Saturday 23rd October Presentation on Soudley and Ruspidge

at 11am in the DHC meeting room. FREE event but please book by phone as limited spaces

Presentation on the Foresters' Forest DHC Oral History project to preserve our collection of recordings of Foresters talking about their lives. This presentation looks at interviewees from Soudley & Ruspidge talking about life in the early to mid 1900s. The talk includes many excerpts of the recordings along with photographs from the DHC archive. Come along to experience a slice of social history and listen to people's tales of growing up, work, school and village life.

For further details see website www.deanheritagecentre.com

Tel 01594 822170



Parish Council Office:

01594 825343, email: info@clerksrspc.co.uk

Village Hall and Group Contacts:

For Soudley	Jane Scott	07961 405806
For Ruspidge:	Jenny East, bookings	01594 823620
	Sally Graham, 200 Club	01594 781449

Member of Parliament:

Mark Harper	01594 823482
	email: harperm@parliament.uk

County Councillors:

For Ruspidge and Buckshaft:

Graham Morgan	01594 829349
	email: graham.morgan@gloucestershire.gov.uk

For Soudley:

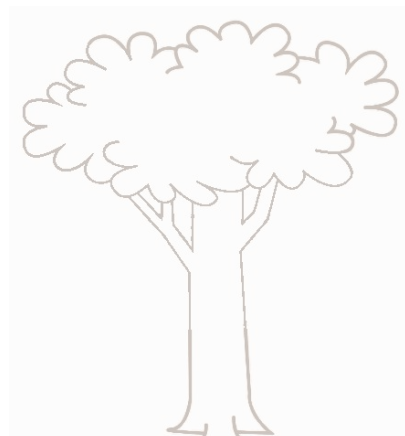
Beki Hoyland	07815 660013
	email: beki.hoyland@gloucestershire.gov.uk

Forest of Dean District Councillors:

Bernie O'Neill (Ruspidge)	01594 827586
Richard Boyles (Soudley)	07979 755101
Nicky Packer (Soudley)	01594 827516

Parish Councillors:

William Acland (Chair)
Tony Matthews
Norman Snell
Helen Medcraft
Joanne Smith
Mark Ogden



Other Useful Telephone Numbers

BIFFA	01594 825803
Cinderford Town Council	01594 822599
Citizen Advice Bureau	0300 330 9006
CAB existing clients	01594 823937
Dog/Street Warden	01594 810000
FOD District Council	01594 810000
Forestry Commission	03000 674800
FVAF	01594 822073
Highways	08000 514514
Health advice (NHS Direct)	111
Police	101
Report/update on power cuts	105
Shire Hall reception	01452 425000
Street lighting	08000 514514
Two Rivers Housing	08003 160897 or 01594 546222

If you find any text difficult to read, please contact the Parish Clerk on 01594 825343.
Please note the new Parish Council email address is: info@clerkrspc.co.uk

Published and printed by: Ruspidge & Soudley Parish Council
First Floor, Rheola House
Belle Vue Centre
Cinderford
GL14 2AB

Tel: 01594 825343
Email: info@clerkrspc.co.uk

Edited by: Joanne Smith
Lilac Cottage
Top Road
Soudley
GL14 2TY
Email: jo@lilaccottage.online

Views and opinions expressed in this publication are not necessarily those of either Ruspidge & Soudley Parish Council or the editor and may not reflect their policies. Neither Ruspidge & Soudley Parish Council nor the editor takes any responsibility for third party comments or events mentioned.

The next issue of ViewPoint will be 1st December. Last date for receipt of copy will be 25th Nov.



FUN FOREST FACTS

A Cinderford wise woman, Ellen Hayward was the last person charged with Witchcraft in Gloucestershire. She was tried at Littledean Jail in 1906.